



Model: See Table 1 Below	Feb. 20, 2018
Serial #: See Table 1 Below	
Product Bulletin # TDS-178	

Back-up Wrench Positioner Access Window Guard

Issue

The Back-up Wrench (BUW) Positioner Access Window is used to service the internal components of the positioner assembly. This access window should never be accessed when the BUW is in operation. Canrig has designed a kit that is now available to guard against potential hand injury.

Affected Positioner Assemblies

The BUW Positioner Access Window Guard Kit (AY23562) is compatible with specific BUW Positioners. See Table 1 for affected CANRIG part numbers and consult your product manual to verify that the kit is compatible with the specific BUW Positioner Assembly on your top drive.

Table 1: Affected Models and Related Part Numbers

Top Drive Model	Affected BUW Positioner Assembly P/N
6027AC	AY10558
1235AC	AY13789
1250AC	AY11241
1275AC	AY10928, AY10928-1



Note: Contact RIGLINE 24/7™ Support to order the back-up wrench positioner access window guard kit.

Recommendation

Canrig recommends that customers consult Table 1 and refer to the top drive product manual to verify that the BUW Positioner is compatible. If compatible, then contact RIGLINE 24/7™ Support to order the BUW Positioner Access Window Guard Kit (AY23562). See Table 2 on page 2 for a parts list. Contact RIGLINE 24/7™ Support for questions or to schedule a technician.

Canrig also recommends regular inspection on the BUW positioner assembly and internal components. Inspect for broken, loose, or worn cylinder pins, cotter pins, or fasteners. Tighten loose parts, and replace worn or broken parts immediately.

Table 2: (AY23562) BUW Positioner Access Window Guard Kit

Item	Qty.	Part No.	Description
1	1	DT23974	GUARD, ACCESS WINDOW, POSITIONER, BUW
2	1	DT23974-1	TAP PAD, GUARD, ACCESS WINDOW, POS, BUW
3	1	DT23974-2	CHAIN LINK, RETENTION, GUARD, POS, BUW
4	4	HH-0375NC-0075-GR8-W	CAPSCR, HEX HD, 3/8-16UNC x 0.75, GR8, W
5	4	LW-0375-NL-SP	LOCKWASHER, 3/8-SP NORD-LOCK
6	3FT	M21-2000-010	WIRE ROPE, 1/16 IN, 7 x 7, STAINLESS
7	4	M19-3006-010	FERRULE, 1/16, OVAL, ALUMINUM
8	3FT	M10022	WIRE ROPE, 1/8, 7 X 19, STAINLESS
9	4	M19-3009-010	FERRULE, 1/8, OVAL, ALUMINUM

Procedure



Warning! Ensure lockout/tagout procedures have been followed before performing any work on this equipment.

1. Extend the BUW Positioner to expose access windows on both sides of the BUW for welding the Tap Pad.
2. Grind the top surface of the bottom plate on the BUW Positioner Inner Tube for weld preparation. See area shown in blue in Figure 1 on page 3. Repeat for both sides of the BUW positioner and ensure the surface area is free of paint, grease, oil, etc.

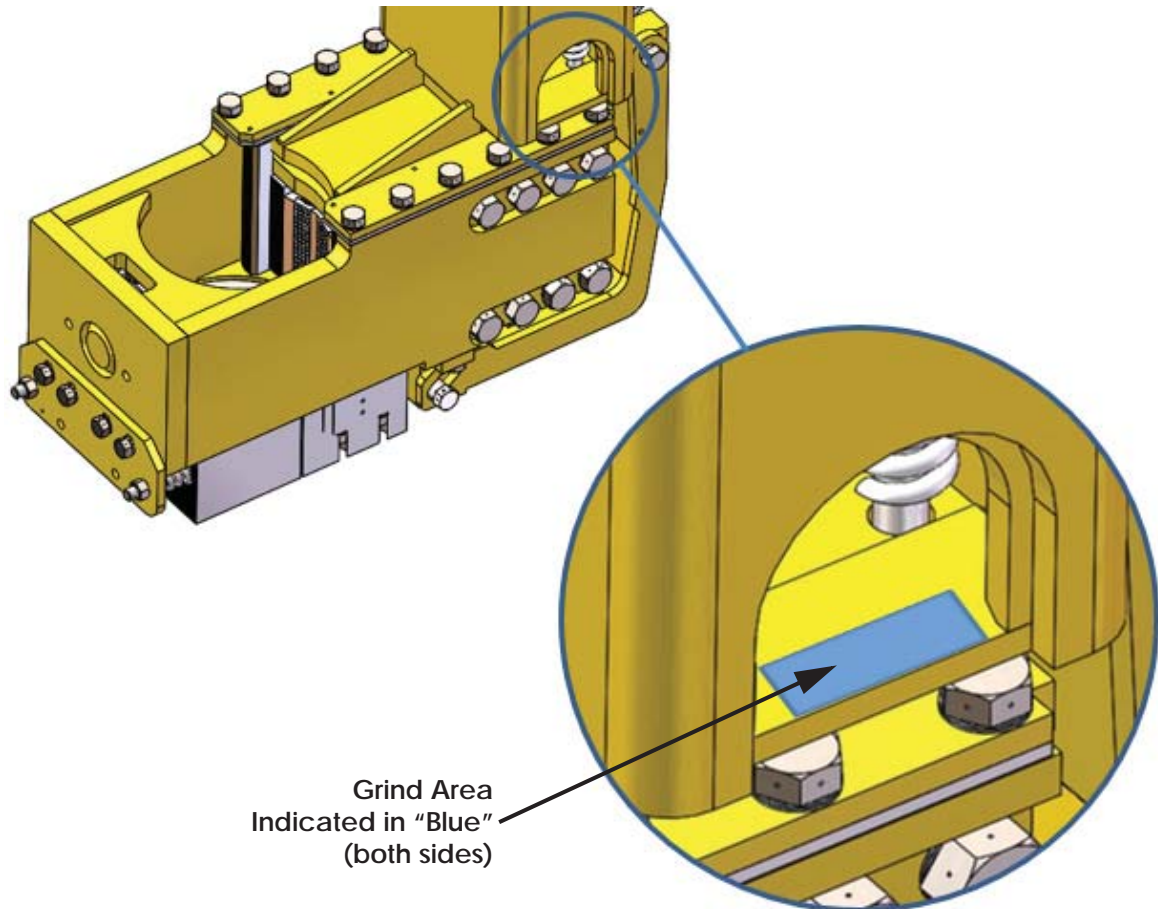


Figure 1: Grind Area indicated in Blue (Both sides)

3. Weld Tap Pad (item 2) and Chain Link (item 3) to the BUW Positioner Assembly Inner Tube at the locations indicated in Figure 2 on page 4 according to welds shown on Figure 3 on page 4. **Note: Tap Pad (item 2) MUST be positioned as indicated in Figure 2 to ensure clearance for fasteners!**
4. Repeat steps 2 and 3 on the opposite side of the BUW Positioner assembly access window opening.

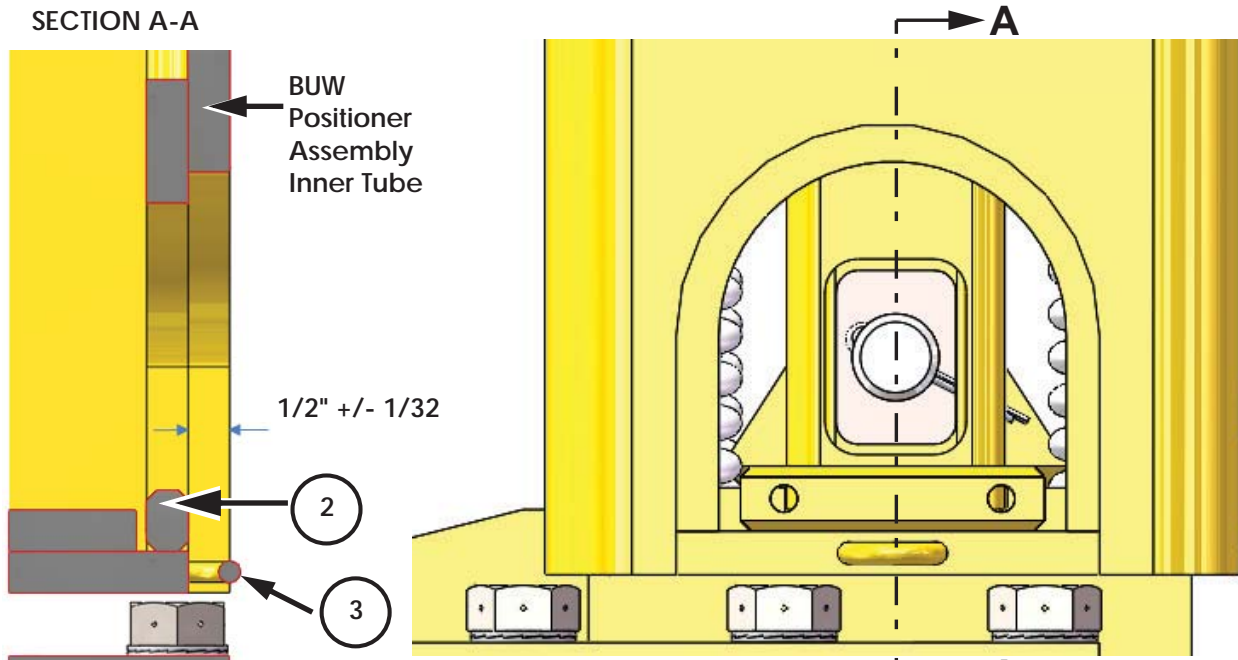


Figure 2: BUW Positioner Assembly - Section View A-A

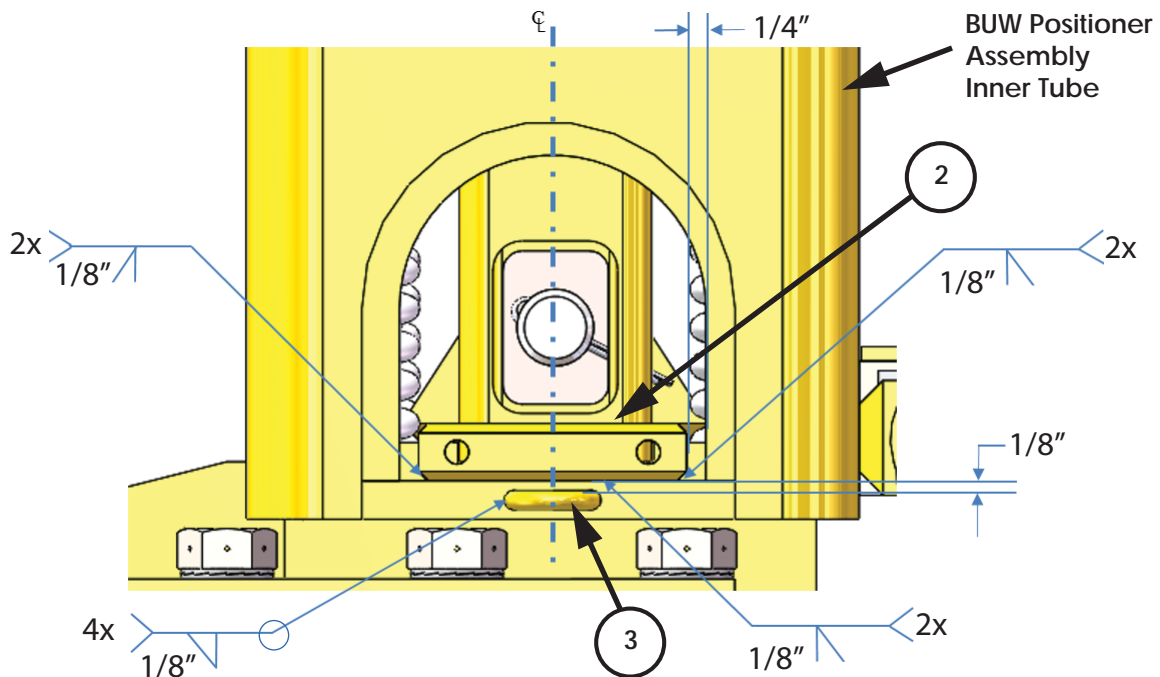


Figure 3: Welding Specifications

5. Allow the welds to cool down prior to applying paint to Tap Pad (item 2) and Chain Link (item 3).
6. Apply Canrig Yellow (RAL #1006, Maize Yellow) paint to Tap Pad (item 2) and Chain Link (item 3) on both sides of the BUW Positioner.
7. Fasten Access Window Guard (item 1) to Tap Pad (item 2) with 2 HH-0375NC-0075-GR8-W fasteners (items 4) fasteners and 2 Nordlock Washers (items 5).

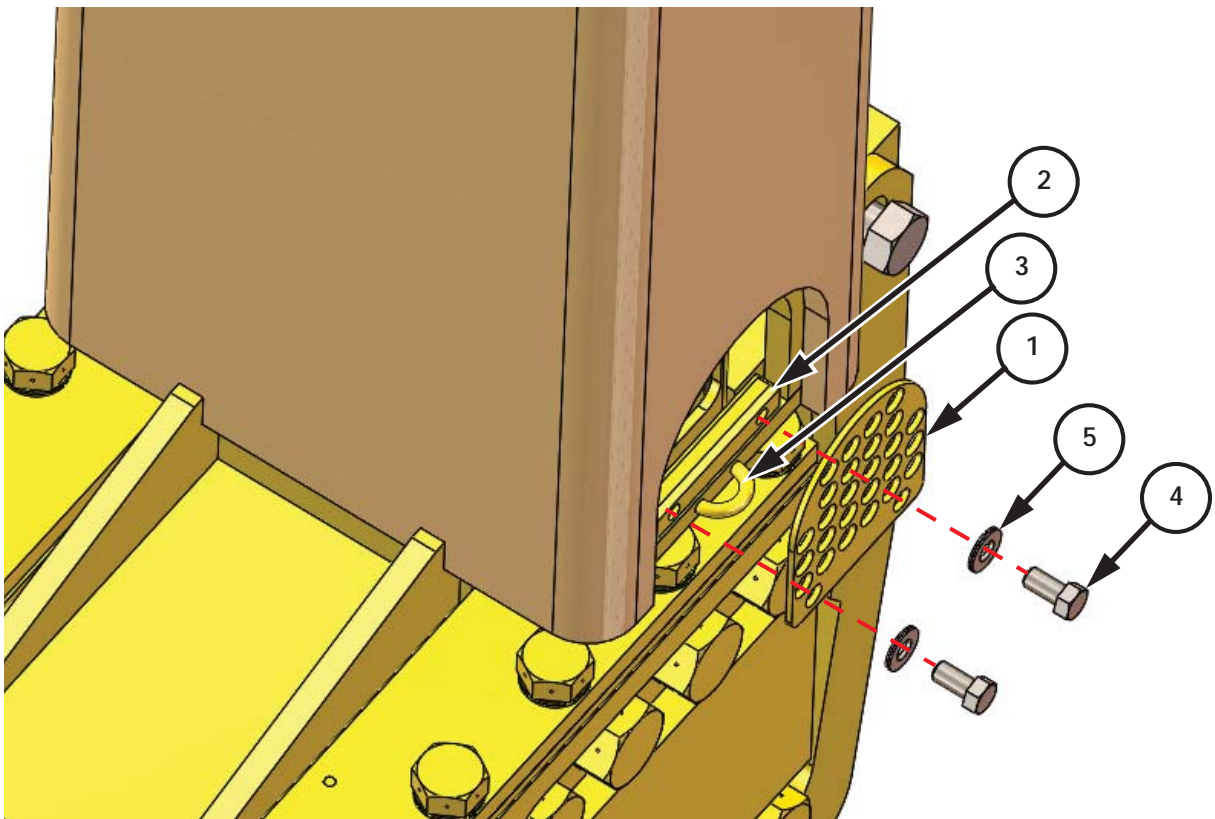


Figure 4: Fastening Access Window Guard

8. Safety wire the HH-0375NC-0075-GR8-W fasteners (item 4) with M21-2000-010 1/16" Wire Rope (item 6) and M19-3006-010 1/16" Ferrule (item 7) as shown on Figure 5.
9. Install Safety Securement to Access Window Guard (item 1). Secure to Chain Link (item 3) with M10022 1/8" Wire Rope (item 8) and M19-3009-010 1/8" Ferrule (item 9) as shown in Figure 5. Ensure that slack is minimal to where the safety wire itself does not become a snag hazard.
10. Repeat steps 5 through 9 on the access window opening on the opposite side of the BUW positioner assembly.

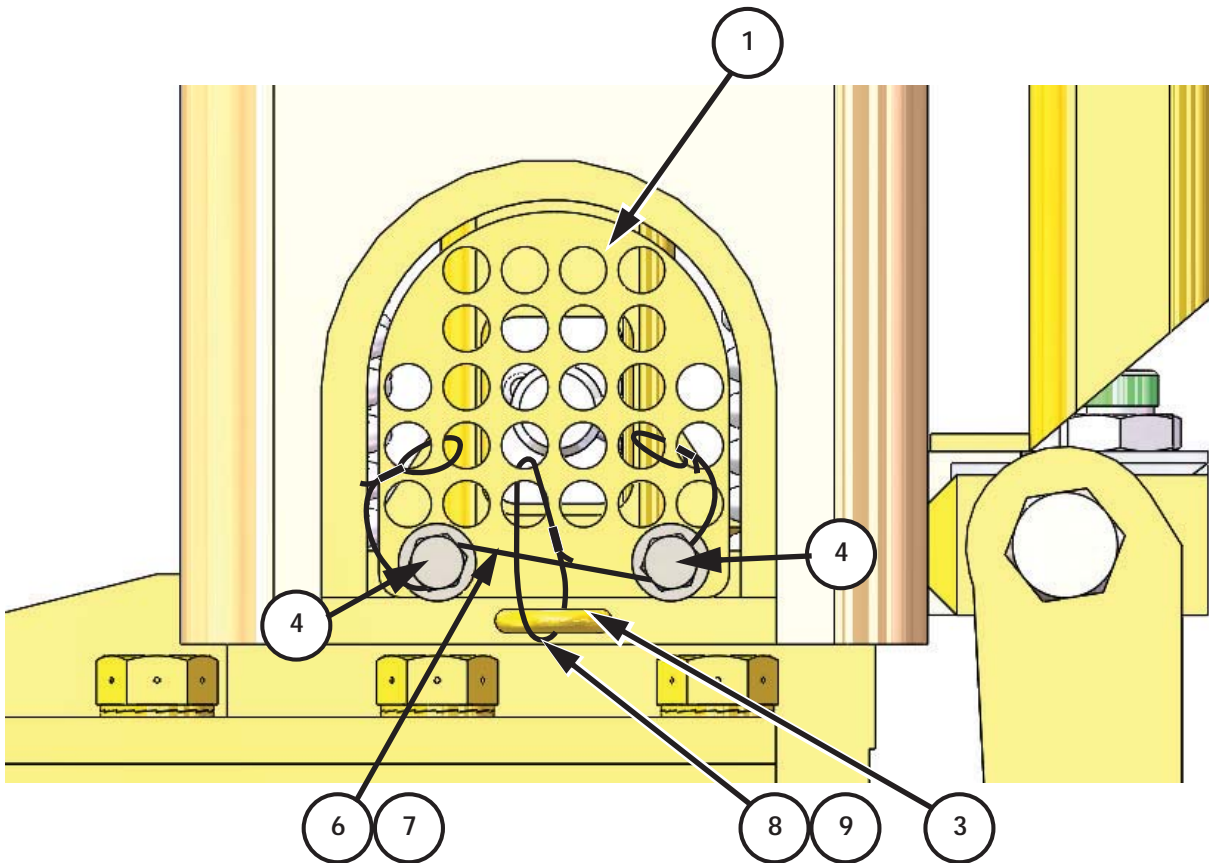


Figure 5: Installing Safety Restraint